

Aquis Exchange Monthly Statistics

Month: Nov-2018
 Total value traded (EUR): € 32,439,197,239
 Auction on Demand value traded (EUR): € 445,773,732

Monthly Top Stocks by Market Share (continuous trading)

Stock	Symbol	Market Share
Cofinimmo	COFBb	14.1%
Sofina SA	SOFb	11.5%
Viscofan SA	VISe	11.3%
Outokumpu OYJ	OUT1Vh	11.1%
Schibsted ASA A	SCHAo	9.5%
Valmet OYJ	VALMTh	9.2%
Outotec OYJ	OTE1Vh	9.1%
AP Moeller - Maersk A/S	MAERBc	9.0%
Cargotec Oyj	CGCBVh	9.0%
Davide Campari-Milano SpA	CPRm	9.0%
Tieto OYJ	TIETOh	8.6%

Monthly Top Stocks by Value (EUR)

Stock	Symbol	Value Traded
Nestle SA	NESNz	€ 627,501,500
Novartis AG	NOVNz	€ 533,585,310
Roche Holding AG	ROGz	€ 470,947,910
Total SA	FPp	€ 279,942,290
Allianz SE	ALVd	€ 232,143,620
BP PLC	BPI	€ 229,703,460
Volkswagen AG	VOW3d	€ 227,013,560
Deutsche Telekom AG	DTEd	€ 225,738,930
Siemens AG	SIEd	€ 224,503,230
UBS Group AG	UBSGz	€ 221,310,740
Vodafone Group PLC	VODI	€ 219,047,730
Wirecard AG	WDId	€ 218,669,240
Rio Tinto PLC	RIOI	€ 209,438,810
Bayer AG	BAYNd	€ 209,188,020
ASML Holding NV	ASMLa	€ 195,698,570



UK Top Stocks

Stock	Symbol	Market Share
Halma PLC	HLMAI	7.3%
NMC Health PLC	NMCI	7.1%
Old Mutual Limited	OMUI	7.0%
Melrose Industries PLC	MROI	6.9%
Bunzl PLC	BNZLI	6.8%



Italian Top Stocks

Stock	Symbol	Market Share
Davide Campari-Milano SpA	CPRm	9.0%
Pirelli and C SpA	PIRCm	8.6%
Buzzi Unicem SpA	BZUm	7.5%
Bper Banca	BPEm	7.2%
A2A SpA	A2Am	6.9%



Swedish Top Stocks

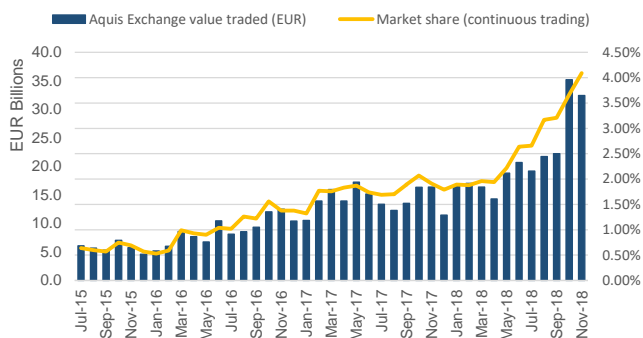
Stock	Symbol	Market Share
Securitas AB	SECUBs	7.4%
Getinge AB	GETIBs	7.0%
Swedbank AB	SWEDAs	6.9%
Assa Abloy AB	ASSABs	6.9%
Tele2 AB	TEL2Bs	6.6%



French Top Stocks

Stock	Symbol	Market Share
L'Oreal SA	ORp	6.0%
Permod-Ricard SA	Rlp	6.0%
Engie	ENGLp	5.3%
Orange SA	ORAp	5.2%
Safran SA	SAFp	5.1%

Aquis Exchange value traded per month



Trading by Market

Market	Value Traded
London	€ 6,694,593,940
Frankfurt	€ 5,727,740,760
Paris	€ 4,864,126,400
Switzerland	€ 4,324,887,230
Milan	€ 2,132,668,740
Stockholm	€ 1,903,553,960
Amsterdam	€ 1,620,663,910
Madrid	€ 1,344,813,370
Copenhagen	€ 1,201,777,090
Helsinki	€ 750,804,960
Oslo	€ 734,343,380
Brussels	€ 535,277,460
London IDR	€ 381,140,250
Lisbon	€ 125,504,660
Vienna	€ 97,300,460



German Top Stocks

Stock	Symbol	Market Share
Deutsche Boerse AG	DB1d	5.8%
Continental AG	CONd	5.6%
Vonovia SE	VNAd	5.3%
Deutsche Telekom AG	DTEd	5.1%
Henkel AG and Co KGaA	HEN3d	5.1%



Swiss Top Stocks

Stock	Symbol	Market Share
Nestle SA	NESNz	8.0%
Givaudan SA	GIVNz	7.1%
Roche Holding AG	ROGz	6.9%
Novartis AG	NOVNz	6.8%
SGS SA	SGSNz	6.2%



Spanish Top Stocks

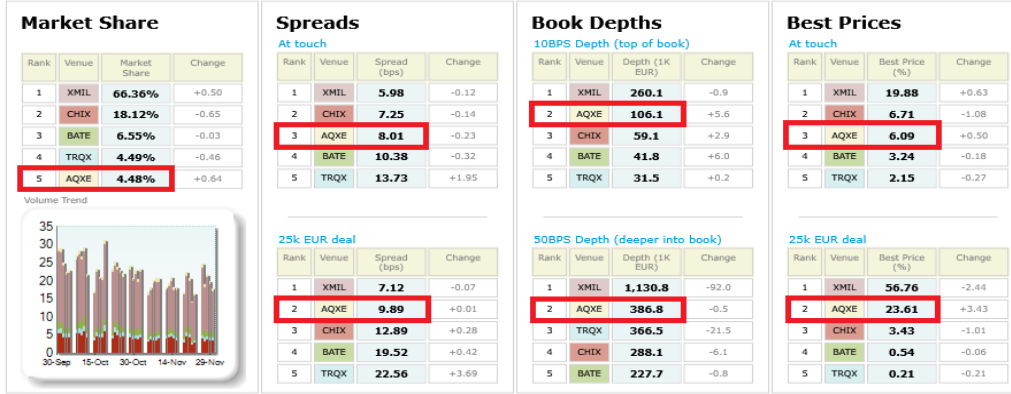
Stock	Symbol	Market Share
Viscofan SA	VISe	11.3%
Merlin Properties Socimi SA	MRLe	6.9%
Aena SME	AEN Ae	6.9%
Cellnex Telecom SAU	CLNXe	6.2%
Siemens Gamesa Renewable Energy	SGREe	5.9%



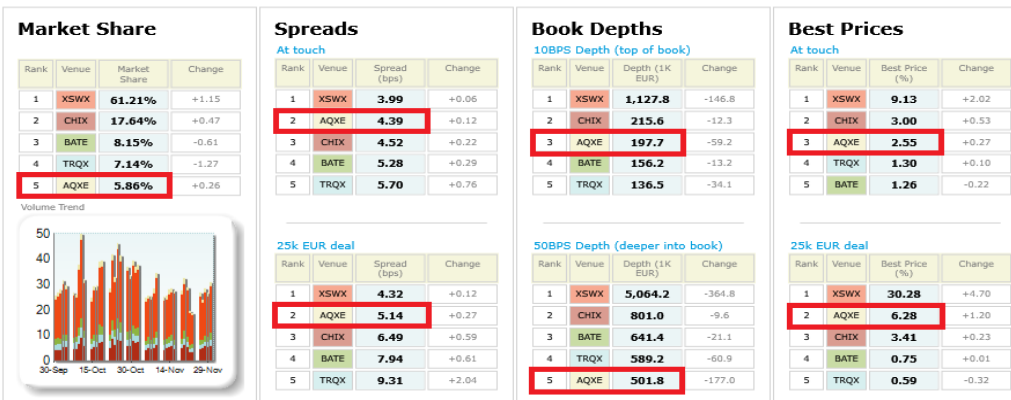
Danish Top Stocks

Stock	Symbol	Market Share
AP Moeller - Maersk A/S	MAERBc	9.0%
Pandora A/S	PNDORc	8.3%
ISS A/S	ISSc	8.1%
Vestas Wind Systems A/S	VVSc	7.8%
Novozymes A/S	NZYMBc	7.4%

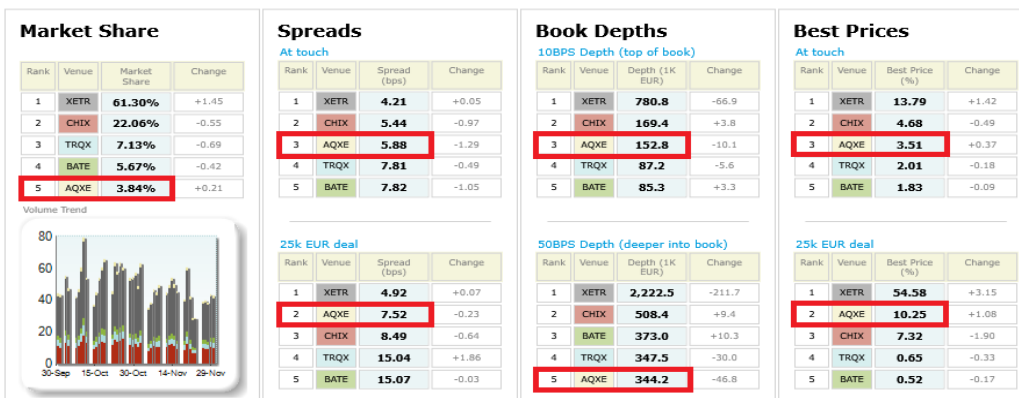
Italian 40 LiquidMetrix Battlemat*



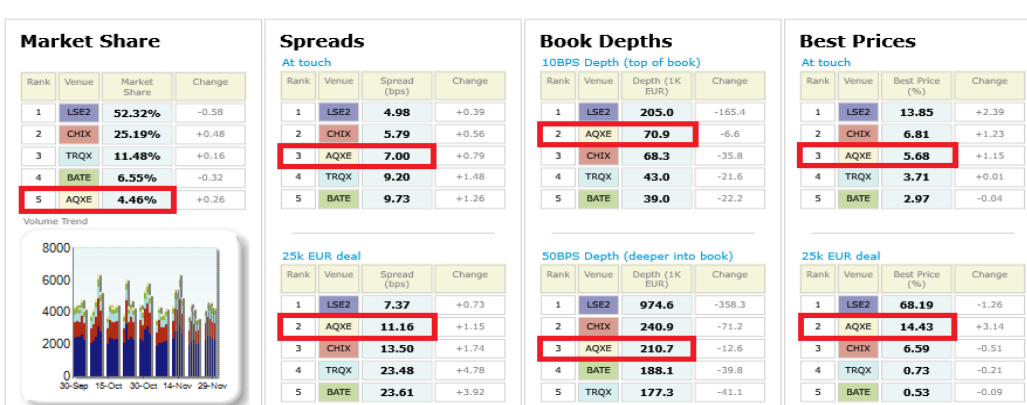
Swiss 20 LiquidMetrix Battlemat*



German 30 LiquidMetrix Battlemat*



UK 100 LiquidMetrix Battlemat*



Italian 40 LiquidMetrix Battlemat*

Percentage Best Price Analysis (Touch Prices)

Venue	Best Bid Price	Equal Best Bid Price	Not Best Bid Price	Best Ask Price	Equal Best Ask Price	Not Best Ask Price
AQXE	5.95%	43.23%	50.82%	6.23%	43.75%	50.02%
BATE	3.11%	30.15%	66.74%	3.37%	30.44%	66.19%
CHIX	6.68%	43.07%	50.25%	6.73%	43.41%	49.85%
TRQX	2.09%	14.37%	83.54%	2.22%	14.78%	83.00%
XMIL	20.41%	52.60%	26.98%	19.34%	52.26%	28.40%

Swiss 20 LiquidMetrix Battlemat*

Percentage Best Price Analysis (Touch Prices)

Venue	Best Bid Price	Equal Best Bid Price	Not Best Bid Price	Best Ask Price	Equal Best Ask Price	Not Best Ask Price
AQXE	2.50%	66.75%	30.75%	2.60%	66.28%	31.12%
BATE	1.17%	59.83%	39.00%	1.35%	59.70%	38.95%
CHIX	3.02%	70.68%	26.30%	2.99%	70.47%	26.55%
TRQX	1.31%	59.11%	39.58%	1.30%	58.48%	40.22%
XSWX	9.09%	74.83%	16.08%	9.17%	74.46%	16.37%

German 30 LiquidMetrix Battlemat*

Percentage Best Price Analysis (Touch Prices)

Venue	Best Bid Price	Equal Best Bid Price	Not Best Bid Price	Best Ask Price	Equal Best Ask Price	Not Best Ask Price
AQXE	3.53%	54.61%	41.85%	3.48%	54.66%	41.86%
BATE	1.78%	36.83%	61.39%	1.88%	36.72%	61.40%
CHIX	4.66%	60.84%	34.50%	4.70%	60.54%	34.76%
TRQX	2.00%	37.55%	60.45%	2.02%	37.76%	60.21%
XETR	13.82%	66.43%	19.76%	13.76%	66.28%	19.96%

UK 100 LiquidMetrix Battlemat*

Percentage Best Price Analysis (Touch Prices)

Venue	Best Bid Price	Equal Best Bid Price	Not Best Bid Price	Best Ask Price	Equal Best Ask Price	Not Best Ask Price
AQXE	5.53%	37.71%	56.76%	5.83%	38.33%	55.84%
BATE	2.88%	23.94%	73.18%	3.05%	24.53%	72.41%
CHIX	6.87%	52.46%	40.67%	6.74%	52.29%	40.97%
LSE2	14.13%	58.12%	27.75%	13.58%	57.50%	28.92%
TRQX	3.62%	29.36%	67.02%	3.80%	29.97%	66.23%

LiquidMetrix definitions:

- **Market share** is based on on-book value traded during continuous trading (excluding auctions). The share is calculated by averaging over all s stocks in the index.
- **Spreads** measure the bid to offer spread of the best visible orders in the book. The result is averaged over the stocks in the index and is based on measurements of the order book every 30 seconds. The value for the spread is quoted in basis points (0.01%).
- **Market depth** measures the amount of visible liquidity (bids and offers) in the order book within 10 and 50 BPS of mid price. The result is averaged over the stocks in the index and is based on measurements of the order book every 30 seconds. This is quoted in '000s of EUR.
- **Best Price** % measures how often each venue posts an absolute best price (no ties) for stocks. The result is averaged over the stocks in the index and is based on measurements of the order book every 5 seconds.
- **Equal Best Price** % shows the percentage of time that each venue had an equal best bid or equal best offer price. The stats are based on full-depth order books taken

*Statistics relating to spreads and book depths have been sourced from LiquidMetrix.