

## Aquis Exchange Monthly Statistics

Month: Oct-2018  
 Value traded (EUR): € 35,201,118,924  
 Volume (no. of shares): 3,032,116,572

### Monthly Top Stocks by Market Share (continuous trading)

Stock	Symbol	Market Share
Cofinimmo	COFBb	13.7%
Sofina SA	SOFb	10.8%
BW LPG Ltd	BWLPGo	9.5%
Outokumpu OYJ	OUT1Vh	8.8%
Gjensidige Forsikring ASA	GJFo	8.8%
Davide Campari-Milano SpA	CPRm	8.4%
Fortum OYJ	FORTMh	8.3%
Roche Holding AG	ROGz	7.7%
AP Moeller - Maersk A/S	MAERBc	7.7%
Bpost SA	BPOSTb	7.5%
Pirelli and C SpA	PIRCm	7.4%

### Monthly Top Stocks by Value (EUR)

Stock	Symbol	Value Traded
Roche Holding AG	ROGz	€ 648,603,730
Nestle SA	NESNz	€ 632,715,730
Novartis AG	NOVNz	€ 595,854,870
Total SA	FPp	€ 348,430,990
Siemens AG	SIEd	€ 325,246,070
Bayer AG	BAYNd	€ 278,312,690
Wirecard AG	WDId	€ 269,739,330
SAP AG	SAPd	€ 253,224,770
Safran SA	SAFp	€ 250,144,560
ASML Holding NV	ASMLa	€ 249,858,200
UniCredit SpA	UCGm	€ 246,567,480
Intesa Sanpaolo SpA	ISPm	€ 241,027,600
LVMH SA	MCp	€ 236,968,060
Volkswagen AG	VOW3d	€ 223,607,880
UBS Group AG	UBSGz	€ 219,925,910



### UK Top Stocks

Stock	Symbol	Market Share
Halma PLC	HLMAl	7.4%
GVC Holdings PLC	GVCi	6.9%
DCC Plc	DCCI	6.8%
Paddy Power Betfair	PPBI	6.7%
Bunzl PLC	BNZLI	6.2%



### Italian Top Stocks

Stock	Symbol	Market Share
Davide Campari-Milano SpA	CPRm	8.4%
Pirelli and C SpA	PIRCm	7.4%
A2A SpA	A2Am	6.0%
Prisma SpA	PRYm	5.5%
Salvatore Ferragamo Italia SpA	SFERm	5.3%



### Swedish Top Stocks

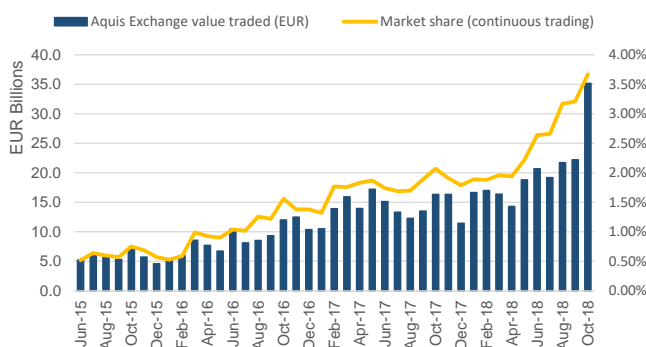
Stock	Symbol	Market Share
Tele2 AB	TEL2Bs	7.0%
Svenska Handelsbanken AB	SHBAs	6.5%
Assa Abloy AB	ASSABs	6.2%
Telefonaktiebolaget LM Ericsson	ERICBs	5.2%
Atlas Copco AB	ATCOBs	5.2%



### French Top Stocks

Stock	Symbol	Market Share
Pernod-Ricard SA	Rlp	5.9%
Safran SA	SAFp	5.5%
Schneider Electric SA	SUp	4.6%
Air Liquide SA	Alp	4.6%
Capgemini SA	CApp	4.4%

## Aquis Exchange value traded per month



### Trading by Market

Market	Value Traded
London	€ 6,667,062,610
Frankfurt	€ 6,143,580,180
Paris	€ 5,622,350,530
Zurich	€ 5,168,576,310
Milan	€ 2,355,489,430
Stockholm	€ 2,121,971,300
Amsterdam	€ 1,798,314,450
Madrid	€ 1,533,275,030
Copenhagen	€ 1,007,929,540
Helsinki	€ 860,199,180
Oslo	€ 707,721,470
Brussels	€ 575,488,040
London IDR	€ 393,096,200
Lisbon	€ 152,656,600
Vienna	€ 93,509,890



### German Top Stocks

Stock	Symbol	Market Share
Henkel AG and Co KGaA	HEN3d	6.4%
Deutsche Boerse AG	DB1d	5.4%
RWE AG	RWEd	5.1%
Deutsche Post AG	DPWd	5.0%
Merck KGaA	MRKd	4.9%



### Swiss Top Stocks

Stock	Symbol	Market Share
Roche Holding AG	ROGz	7.7%
Givaudan SA	GIVNz	6.9%
SGS SA	SGSNz	6.5%
Novartis AG	NOVNz	6.5%
Nestle SA	NESNz	6.4%



### Spanish Top Stocks

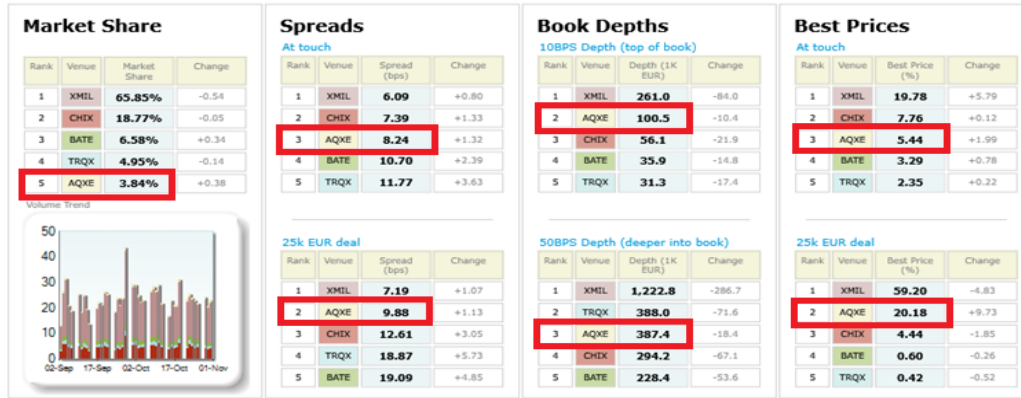
Stock	Symbol	Market Share
Viscofan SA	VISe	7.2%
Enagas SA	ENGe	6.3%
Iberdrola SA	IBEe	6.1%
Amadeus IT Holding SA	AMSe	6.1%
Aena SME	AENaE	5.7%



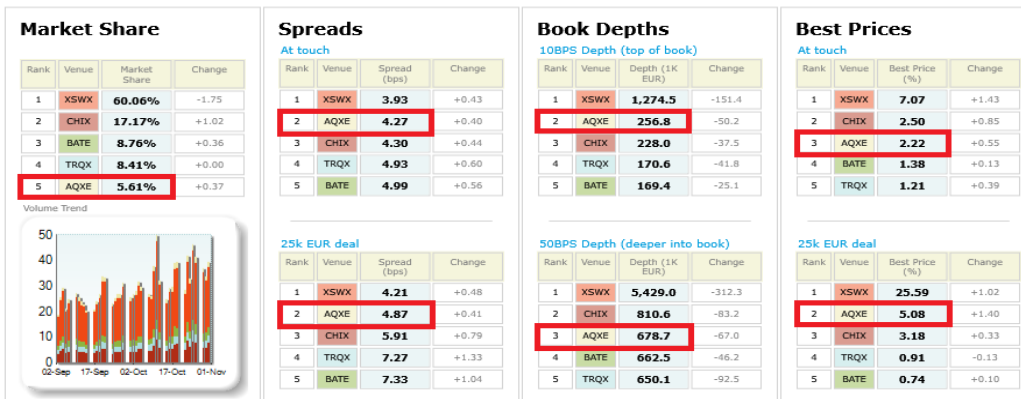
### Danish Top Stocks

Stock	Symbol	Market Share
AP Moeller - Maersk A/S	MAERBc	7.7%
William Demant Holding A/S	WDHc	7.0%
DSV A/S	DSVc	6.3%
Pandora A/S	PNDORc	5.9%
Vestas Wind Systems A/S	VVSc	5.7%

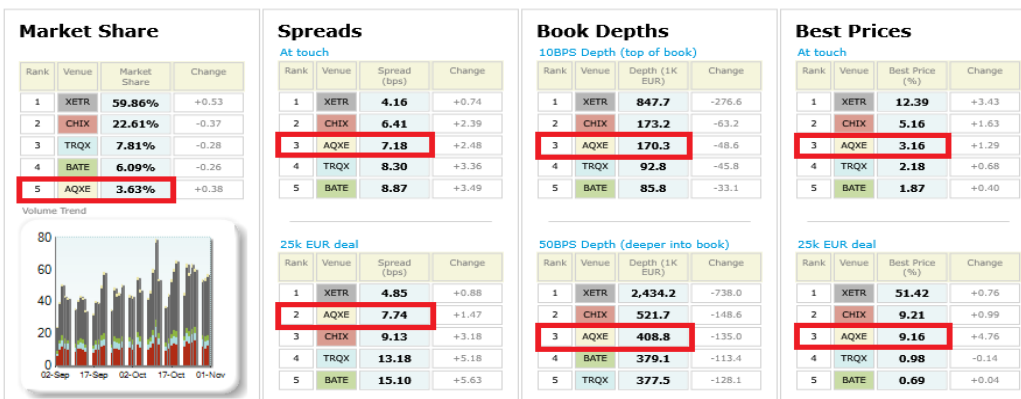
Italian 40 LiquidMetrix Battlemat\*



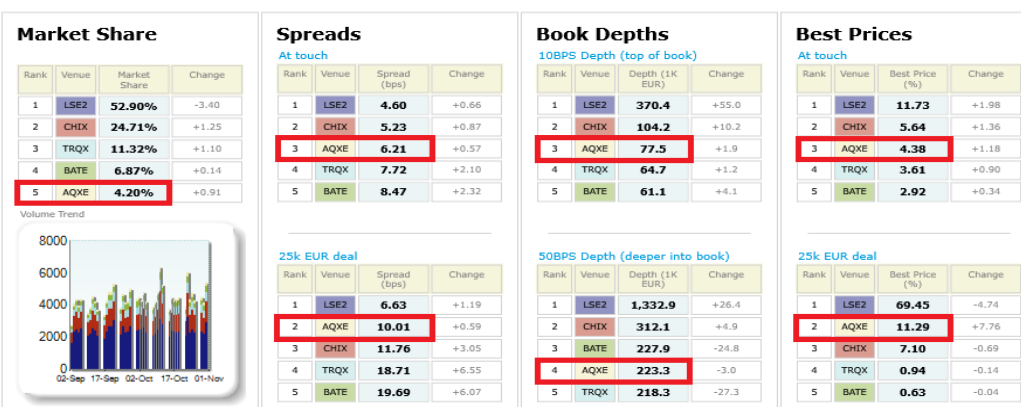
Swiss 20 LiquidMetrix Battlemat\*



German 30 LiquidMetrix Battlemat\*



UK 100 LiquidMetrix Battlemat\*



## Italian 40 LiquidMetrix Battlemap\*

### Percentage Best Price Analysis (Touch Prices)

Venue	Best Bid Price	Equal Best Bid Price	Not Best Bid Price	Best Ask Price	Equal Best Ask Price	Not Best Ask Price
AQXE	5.43%	41.73%	52.85%	5.46%	42.23%	52.31%
BATE	3.31%	30.88%	65.81%	3.27%	31.44%	65.29%
CHIX	7.60%	43.67%	48.73%	7.92%	44.28%	47.80%
TRQX	2.19%	18.56%	79.25%	2.51%	19.10%	78.39%
XMIL	20.39%	52.49%	27.12%	19.17%	52.38%	28.45%

## Swiss 20 LiquidMetrix Battlemap\*

### Percentage Best Price Analysis (Touch Prices)

Venue	Best Bid Price	Equal Best Bid Price	Not Best Bid Price	Best Ask Price	Equal Best Ask Price	Not Best Ask Price
AQXE	2.28%	70.19%	27.53%	2.16%	69.82%	28.02%
BATE	1.28%	63.44%	35.28%	1.49%	63.94%	34.57%
CHIX	2.56%	75.02%	22.42%	2.44%	74.95%	22.61%
TRQX	1.18%	66.56%	32.26%	1.24%	66.37%	32.40%
XSWX	7.05%	78.50%	14.44%	7.08%	77.93%	14.98%

## German 30 LiquidMetrix Battlemap\*

### Percentage Best Price Analysis (Touch Prices)

Venue	Best Bid Price	Equal Best Bid Price	Not Best Bid Price	Best Ask Price	Equal Best Ask Price	Not Best Ask Price
AQXE	3.31%	56.07%	40.62%	3.01%	55.25%	41.74%
BATE	1.85%	38.75%	59.40%	1.89%	38.95%	59.16%
CHIX	5.23%	63.53%	31.23%	5.08%	63.31%	31.61%
TRQX	2.10%	41.02%	56.88%	2.27%	42.29%	55.44%
XETR	12.25%	67.78%	19.97%	12.54%	67.70%	19.77%

## UK 100 LiquidMetrix Battlemap\*

### Percentage Best Price Analysis (Touch Prices)

Venue	Best Bid Price	Equal Best Bid Price	Not Best Bid Price	Best Ask Price	Equal Best Ask Price	Not Best Ask Price
AQXE	4.46%	44.52%	51.02%	4.30%	43.95%	51.75%
BATE	2.83%	30.13%	67.04%	3.01%	30.13%	66.86%
CHIX	5.75%	58.14%	36.12%	5.54%	57.54%	36.92%
LSE2	11.65%	62.94%	25.42%	11.82%	62.64%	25.54%
TRQX	3.47%	36.39%	60.15%	3.76%	36.95%	59.29%

#### LiquidMetrix definitions:

- **Market share** is based on on-book value traded during continuous trading. The share is calculated by averaging over all stocks in the index.
- **Spreads** measure the bid to offer spread of the best visible orders in the book. The result is averaged over the stocks in the index and is based on measurements of the order book every 30 seconds. The value for the spread is quoted in basis points (0.01%).
- **Market depth** measures the amount of visible liquidity (bids and offers) in the order book within 10 and 50 BPS of mid price. The result is averaged over the stocks in the index and is based on measurements of the order book every 30 seconds. This is quoted in '000s of EUR.
- **Best Price** % measures how often each venue posts an absolute best price (no ties) for stocks. The result is averaged over the stocks in the index and is based on measurements of the order book every 5 seconds.
- **Equal Best Price** % shows the percentage of time that each venue had an equal best bid or equal best offer price. The stats are based on full-depth order books taken

\*Statistics relating to spreads and book depths have been sourced from LiquidMetrix.