

Aquis Exchange Monthly Statistics

Month: Sep-2018
 Value traded (EUR): € 22,235,117,739
 Volume (no. of shares): 1,868,947,922

Monthly Top Stocks by Market Share (continuous trading)

Stock	Symbol	Market Share
Cofinimmo	COFBb	14.5%
Sofina SA	SOFb	12.0%
Gjensidige Forsikring ASA	GJFo	11.9%
Davide Campari-Milano SpA	CPRm	10.9%
Halma PLC	HLMAl	10.2%
Fortum OYJ	FORTMh	8.9%
Ackermans and van Haaren NV	ACKBb	8.3%
GVC Holdings PLC	GVCi	8.2%
Paddy Power Betfair	PPBI	7.5%
Roche Holding AG	ROGz	7.3%
Capgemini SA	CAPP	7.2%

Monthly Top Stocks by Value (EUR)

Stock	Symbol	Value Traded
Nestle SA	NESNz	€ 361,837,560
Novartis AG	NOVNz	€ 343,330,950
Roche Holding AG	ROGz	€ 341,241,470
Bayer AG	BAYNd	€ 265,302,060
Intesa Sanpaolo SpA	ISPm	€ 260,409,370
Total SA	FPP	€ 218,000,310
UniCredit SpA	UCGm	€ 191,599,830
Siemens AG	SIEd	€ 185,439,510
Enel Global Trading	ENELm	€ 168,102,320
SAP AG	SAPd	€ 167,401,030
Cie Financiere Richemont SA	CFRz	€ 163,855,250
BNP Paribas SA	BNPP	€ 159,688,280
Wirecard AG	WDId	€ 149,215,400
UBS Group AG	UBSGz	€ 143,741,960
Amadeus IT Holding SA	AMSe	€ 142,309,010



UK Top Stocks

Stock	Symbol	Market Share
Halma PLC	HLMAl	10.2%
GVC Holdings PLC	GVCi	8.2%
Paddy Power Betfair	PPBI	7.5%
DCC Plc	DCCI	6.7%
Compass Group PLC	CPGI	5.5%



Italian Top Stocks

Stock	Symbol	Market Share
Davide Campari-Milano SpA	CPRm	10.9%
Prysmian SpA	PRYm	6.1%
Terna Rete Elettrica Nazionale SpA	TRNm	4.8%
Enel Global Trad	ENELm	4.6%
Pirelli and C SpA	PIRCm	4.5%



Swedish Top Stocks

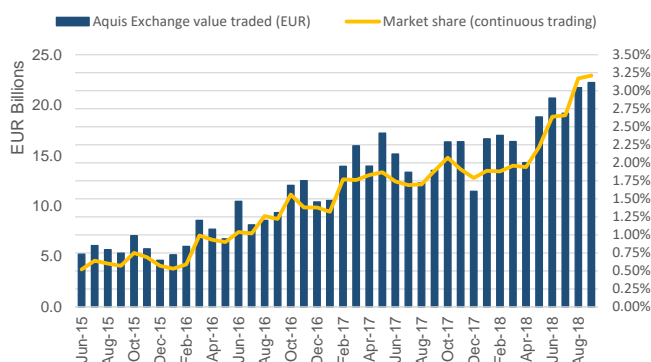
Stock	Symbol	Market Share
Svenska Handelsbanken AB	SHBAs	7.1%
Swedbank AB	SWEDAs	6.2%
Telefonaktiebolaget LM Ericsson	ERICBs	5.3%
Tele2 AB	TEL2Bs	4.5%
Svenska Cellulosa AB	SCABs	4.3%



French Top Stocks

Stock	Symbol	Market Share
Capgemini SA	CAPP	7.2%
Permod-Ricard SA	RIP	5.8%
Orange SA	ORAp	5.2%
Vivendi SA	VIVp	5.2%
Air Liquide SA	Alp	5.1%

Aquis Exchange value traded per month



Trading by Market

Market	Value Traded
Frankfurt	€ 4,163,946,750
London	€ 4,142,544,390
Paris	€ 3,649,354,770
Zurich	€ 3,293,126,680
Milan	€ 1,694,723,730
Amsterdam	€ 1,216,805,260
Stockholm	€ 1,014,467,990
Madrid	€ 956,009,150
Copenhagen	€ 510,492,630
Helsinki	€ 439,037,910
Brussels	€ 400,254,280
Oslo	€ 390,424,670
London IDR	€ 215,348,050
Lisbon	€ 85,161,090
Vienna	€ 63,420,030



German Top Stocks

Stock	Symbol	Market Share
Henkel AG and Co KGaA	HEN3d	7.1%
Deutsche Boerse AG	DB1d	5.5%
RWE AG	RWEEd	5.2%
Deutsche Post AG	DPWd	5.1%
Adidas AG	ADSD	4.5%



Swiss Top Stocks

Stock	Symbol	Market Share
Roche Holding AG	ROGz	7.3%
Givaudan SA	GIVNz	7.0%
Lonza Group AG	LONNz	6.5%
Novartis AG	NOVNz	6.4%
Swiss Re AG	SRENz	6.3%



Spanish Top Stocks

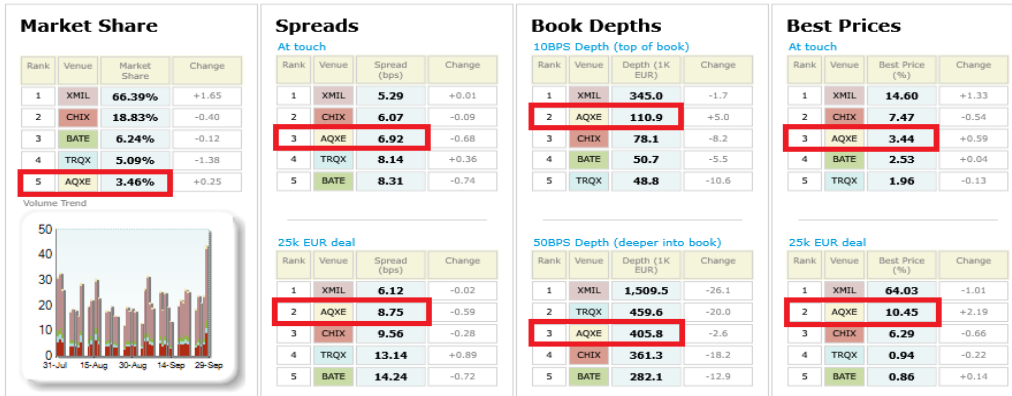
Stock	Symbol	Market Share
Viscofan SA	VISe	6.9%
Amadeus IT Holding SA	AMSe	6.8%
Aena SME	AENAE	6.1%
Cellnex Telecom SAU	CLNXe	5.1%
Indra Sistemas SA	IDRe	4.7%



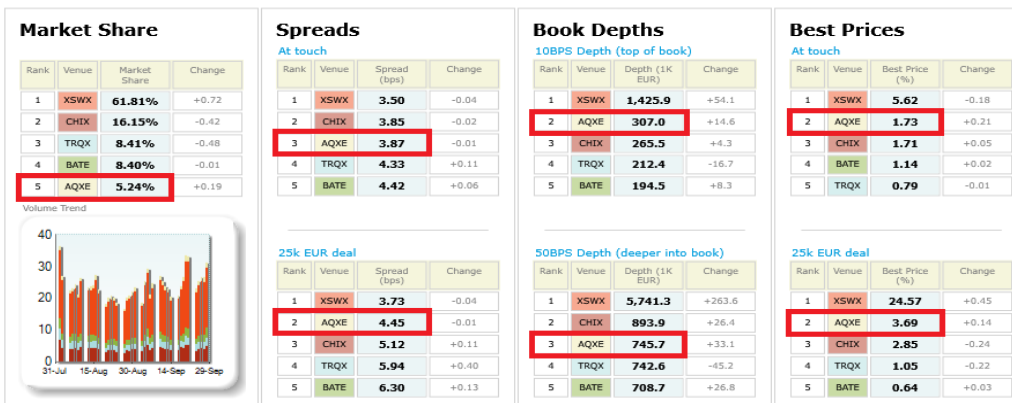
Danish Top Stocks

Stock	Symbol	Market Share
William Demant Holding A/S	WDHc	6.4%
AP Moeller - Maersk A/S	MAERBc	5.9%
DSV A/S	DSVc	4.9%
Coloplast A/S	COLOBc	4.1%
Carlsberg A/S	CARLBc	4.1%

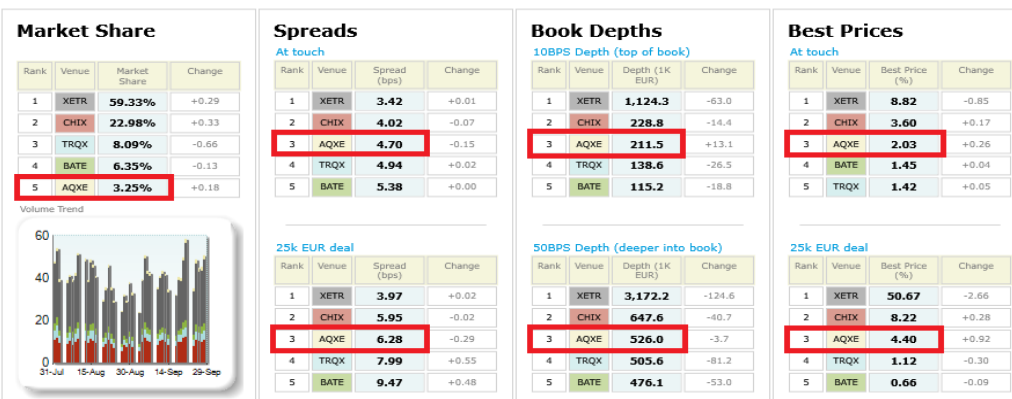
Italian 40 LiquidMetrix Battlemat*



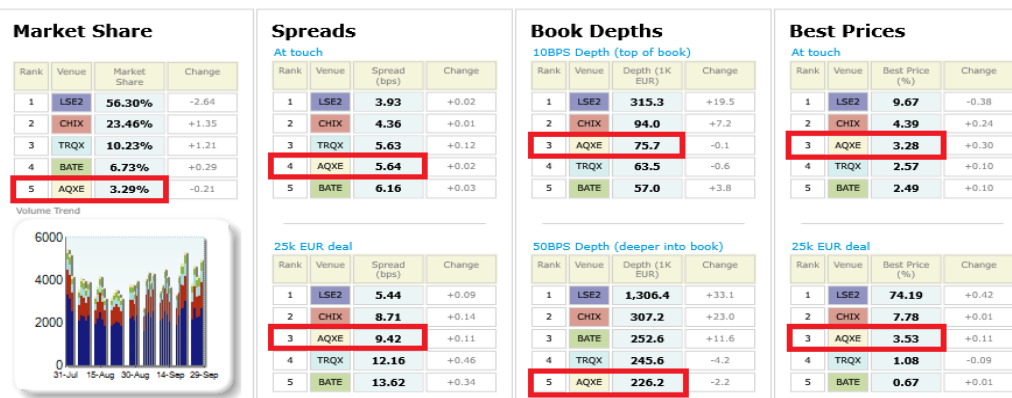
Swiss 20 LiquidMetrix Battlemat*



German 30 LiquidMetrix Battlemat*



UK 100 LiquidMetrix Battlemat*



Italian 40 LiquidMetrix Battlemap*

Percentage Best Price Analysis (Touch Prices)

Venue	Best Bid Price	Equal Best Bid Price	Not Best Bid Price	Best Ask Price	Equal Best Ask Price	Not Best Ask Price
AQXE	3.40%	47.53%	49.06%	3.47%	47.59%	48.94%
BATE	2.42%	42.97%	54.61%	2.64%	43.00%	54.36%
CHIX	7.57%	58.03%	34.40%	7.38%	57.40%	35.23%
TRQX	1.86%	36.62%	61.52%	2.07%	36.89%	61.04%
XMIL	14.69%	60.71%	24.60%	14.51%	60.11%	25.38%

Swiss 20 LiquidMetrix Battlemap*

Percentage Best Price Analysis (Touch Prices)

Venue	Best Bid Price	Equal Best Bid Price	Not Best Bid Price	Best Ask Price	Equal Best Ask Price	Not Best Ask Price
AQXE	1.79%	75.61%	22.60%	1.68%	75.35%	22.97%
BATE	1.08%	67.53%	31.39%	1.21%	67.60%	31.19%
CHIX	1.76%	78.63%	19.61%	1.65%	78.33%	20.02%
TRQX	0.80%	71.39%	27.80%	0.78%	70.88%	28.33%
XSWX	5.51%	82.15%	12.33%	5.73%	81.96%	12.31%

German 30 LiquidMetrix Battlemap*

Percentage Best Price Analysis (Touch Prices)

Venue	Best Bid Price	Equal Best Bid Price	Not Best Bid Price	Best Ask Price	Equal Best Ask Price	Not Best Ask Price
AQXE	2.01%	63.94%	34.05%	2.04%	63.77%	34.18%
BATE	1.43%	51.18%	47.39%	1.47%	51.47%	47.07%
CHIX	3.59%	72.53%	23.88%	3.62%	72.34%	24.04%
TRQX	1.43%	56.63%	41.94%	1.41%	56.51%	42.08%
XETR	8.80%	76.16%	15.04%	8.84%	75.88%	15.27%

UK 100 LiquidMetrix Battlemap*

Percentage Best Price Analysis (Touch Prices)

Venue	Best Bid Price	Equal Best Bid Price	Not Best Bid Price	Best Ask Price	Equal Best Ask Price	Not Best Ask Price
AQXE	3.30%	46.86%	49.84%	3.26%	46.90%	49.84%
BATE	2.55%	41.14%	56.30%	2.42%	40.56%	57.02%
CHIX	4.44%	64.99%	30.57%	4.34%	64.95%	30.71%
LSE2	9.57%	68.03%	22.39%	9.77%	68.34%	21.89%
TRQX	2.52%	48.81%	48.67%	2.61%	49.17%	48.22%

LiquidMetrix definitions:

- **Market share** is based on on-book value traded during continuous trading. The share is calculated by averaging over all stocks in the index.
- **Spreads** measure the bid to offer spread of the best visible orders in the book. The result is averaged over the stocks in the index and is based on measurements of the order book every 30 seconds. The value for the spread is quoted in basis points (0.01%).
- **Market depth** measures the amount of visible liquidity (bids and offers) in the order book within 10 and 50 BPS of mid price. The result is averaged over the stocks in the index and is based on measurements of the order book every 30 seconds. This is quoted in '000s of EUR.
- **Best Price %** measures how often each venue posts an absolute best price (no ties) for stocks. The result is averaged over the stocks in the index and is based on measurements of the order book every 5 seconds.
- **Equal Best Price %** shows the percentage of time that each venue had an equal best bid or equal best offer price. The stats are based on full-depth order books taken

*Statistics relating to spreads and book depths have been sourced from LiquidMetrix.