

Aquis Exchange Monthly Statistics

Month: Aug-2018
 Value traded (EUR): € 21,742,758,256
 Volume (no. of shares): 1,734,044,169

Monthly Top Stocks by Market Share (continuous trading)

Stock	Symbol	Market Share
Elia System Operator SA/NV	ELIb	18.5%
Fortum OYJ	FORTMh	9.6%
GVC Holdings PLC	GVCi	9.6%
DCC Plc	DCCI	9.4%
Ackermans and van Haaren NV	ACKBb	8.6%
Viscofan SA	VISe	8.6%
Halma PLC	HLMAl	8.3%
Davide Campari-Milano SpA	CPRm	7.8%
Aena SME	AENAE	7.4%
Pernod-Ricard SA	RlP	7.2%
Novartis AG	NOVNz	6.9%

Monthly Top Stocks by Value (EUR)

Stock	Symbol	Value Traded
Novartis AG	NOVNz	€ 377,412,740
Roche Holding AG	ROGz	€ 344,542,240
Nestle SA	NESNz	€ 343,601,810
Bayer AG	BAYNd	€ 278,387,400
Siemens AG	SIEd	€ 238,531,240
UniCredit SpA	UCGm	€ 220,784,190
Total SA	FPp	€ 215,468,700
Intesa Sanpaolo SpA	ISPM	€ 200,372,260
Adidas AG	ADSD	€ 189,119,580
Rio Tinto PLC	RIOI	€ 155,899,310
Deutsche Post AG	DPWd	€ 151,699,970
BNP Paribas SA	BNPP	€ 150,247,480
Royal Dutch Shell PLC	RDSAa	€ 138,776,340
Wirecard AG	WDId	€ 138,088,420
Sanofi	SANp	€ 135,044,680



UK Top Stocks

Stock	Symbol	Market Share
GVC Holdings PLC	GVCi	9.6%
DCC Plc	DCCI	9.4%
Halma PLC	HLMAl	8.3%
Old Mutual Limited	OMUI	5.7%
Melrose Industries PLC	MROI	5.5%



Italian Top Stocks

Stock	Symbol	Market Share
Davide Campari-Milano SpA	CPRm	7.8%
Prysmian SpA	PRYm	6.2%
Moncler SpA	MONCm	4.9%
Telecom Italia SpA	TITm	4.3%
Mediobanca SpA	MBm	4.2%



Swedish Top Stocks

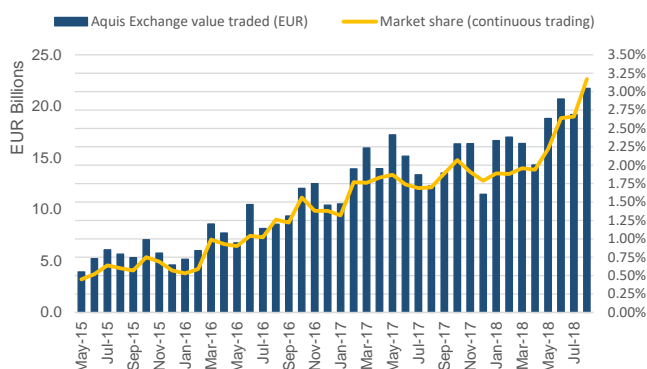
Stock	Symbol	Market Share
Electrolux AB	ELUXBs	5.6%
Svenska Handelsbanken AB	SHBAs	5.4%
Swedbank AB	SWEDAs	5.0%
Telefonaktiebolaget LM Ericsson	ERICBs	4.9%
Essity Aktiebolag AB B	ESSIBs	4.4%



French Top Stocks

Stock	Symbol	Market Share
Pernod-Ricard SA	RlP	7.2%
Cappellini SA	CAPp	6.8%
Safran SA	SAFP	6.3%
Cie Generale des Etablissements Michelin	MLP	5.5%
Air Liquide SA	AlP	4.8%

Aquis Exchange value traded per month



Trading by Market

Market	Value Traded
London	€ 4,369,634,730
Frankfurt	€ 4,316,799,390
Paris	€ 3,353,695,150
Zurich	€ 3,119,435,430
Milan	€ 1,558,609,210
Amsterdam	€ 1,120,367,850
Stockholm	€ 918,111,120
Madrid	€ 799,234,770
Copenhagen	€ 644,059,210
Oslo	€ 415,630,610
Brussels	€ 393,301,640
Helsinki	€ 392,497,830
London IDR	€ 192,067,830
Lisbon	€ 94,117,610
Vienna	€ 55,195,560



German Top Stocks

Stock	Symbol	Market Share
Henkel AG and Co KGaA	HEN3d	6.9%
Deutsche Post AG	DPWd	6.3%
Deutsche Boerse AG	DB1d	6.0%
Vonovia SE	VNAd	5.1%
Infineon Technologies AG	IFXd	5.0%



Swiss Top Stocks

Stock	Symbol	Market Share
Novartis AG	NOVNz	6.9%
SGS SA	SGSNz	6.9%
Givaudan SA	GIVNz	6.4%
Lonza Group AG	LONNz	6.3%
Nestle SA	NESNz	6.0%



Spanish Top Stocks

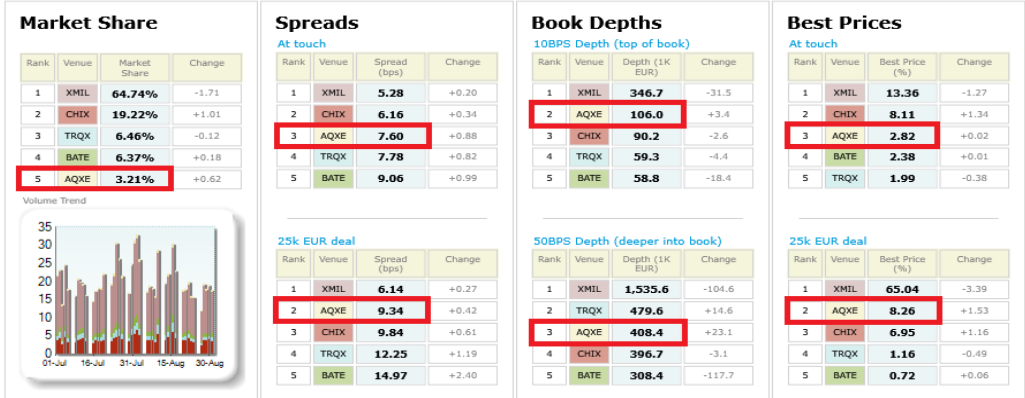
Stock	Symbol	Market Share
Viscofan SA	VISe	8.6%
Aena SME	AENAE	7.4%
Amadeus IT Holding SA	AMSe	6.7%
Enagas SA	ENGe	5.4%
Indra Sistemas SA	IDRe	5.1%



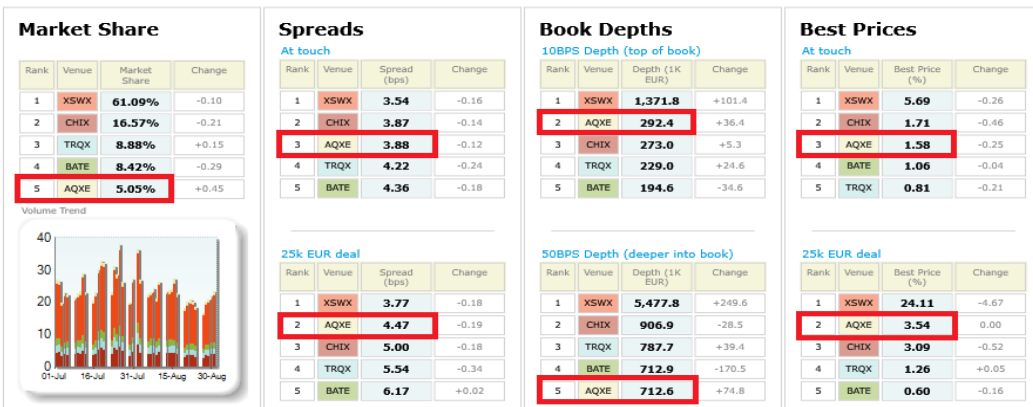
Danish Top Stocks

Stock	Symbol	Market Share
William Demant Holding A/S	WDHc	6.2%
AP Moeller - Maersk A/S	MAERBc	5.6%
DSV A/S	DSVc	4.6%
Genmab A/S	GENc	4.4%
Novozymes A/S	NZYMBc	4.3%

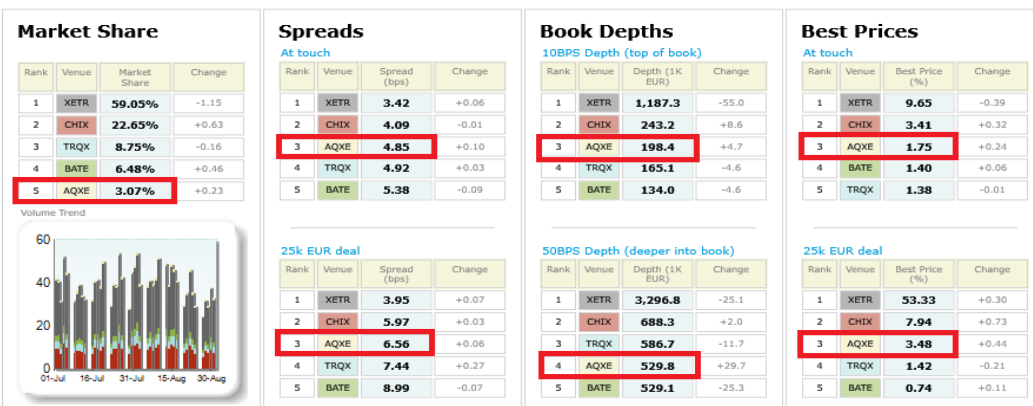
Italian 40 LiquidMetrix Battlemap*



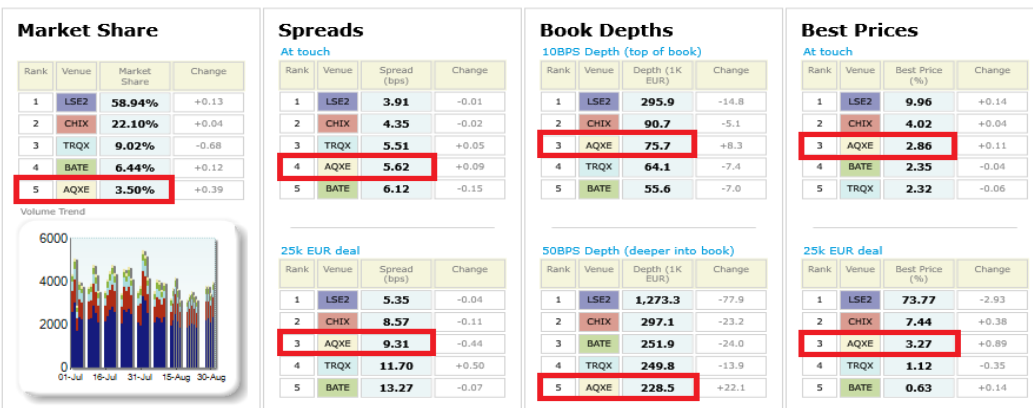
Swiss 20 LiquidMetrix Battlemap*



German 30 LiquidMetrix Battlemap*



UK 100 LiquidMetrix Battlemap*



Italian 40 LiquidMetrix Battlemap*

Percentage Best Price Analysis (Touch Prices)

Venue	Best Bid Price	Equal Best Bid Price	Not Best Bid Price	Best Ask Price	Equal Best Ask Price	Not Best Ask Price
AQXE	2.71%	46.78%	50.51%	2.92%	43.30%	53.78%
BATE	2.32%	44.76%	52.93%	2.45%	40.62%	56.94%
CHIX	8.16%	61.07%	30.77%	8.07%	56.12%	35.82%
TRQX	1.84%	41.32%	56.84%	2.15%	38.00%	59.85%
XMIL	13.62%	61.36%	25.02%	13.10%	60.50%	26.40%

Swiss 20 LiquidMetrix Battlemap*

Percentage Best Price Analysis (Touch Prices)

Venue	Best Bid Price	Equal Best Bid Price	Not Best Bid Price	Best Ask Price	Equal Best Ask Price	Not Best Ask Price
AQXE	1.49%	74.10%	24.41%	1.67%	76.39%	21.94%
BATE	1.09%	67.42%	31.49%	1.03%	67.87%	31.10%
CHIX	1.83%	77.74%	20.44%	1.60%	78.26%	20.14%
TRQX	0.85%	70.91%	28.24%	0.77%	70.88%	28.34%
XSWX	5.95%	82.17%	11.88%	5.43%	82.25%	12.32%

German 30 LiquidMetrix Battlemap*

Percentage Best Price Analysis (Touch Prices)

Venue	Best Bid Price	Equal Best Bid Price	Not Best Bid Price	Best Ask Price	Equal Best Ask Price	Not Best Ask Price
AQXE	1.81%	61.97%	36.22%	1.70%	61.75%	36.56%
BATE	1.42%	50.70%	47.88%	1.37%	51.65%	46.98%
CHIX	3.34%	71.60%	25.06%	3.49%	72.13%	24.38%
TRQX	1.38%	56.33%	42.29%	1.38%	57.73%	40.89%
XETR	9.83%	75.83%	14.34%	9.46%	76.15%	14.39%

UK 100 LiquidMetrix Battlemap*

Percentage Best Price Analysis (Touch Prices)

Venue	Best Bid Price	Equal Best Bid Price	Not Best Bid Price	Best Ask Price	Equal Best Ask Price	Not Best Ask Price
AQXE	2.90%	49.43%	47.67%	2.83%	45.27%	51.90%
BATE	2.36%	45.21%	52.43%	2.33%	40.91%	56.76%
CHIX	4.04%	67.02%	28.94%	4.00%	62.89%	33.11%
LSE2	10.03%	68.72%	21.25%	9.88%	68.95%	21.17%
TRQX	2.30%	52.48%	45.22%	2.33%	48.34%	49.33%

LiquidMetrix definitions:

- **Market share** is based on on-book value traded during continuous trading. The share is calculated by averaging over all stocks in the index.
- **Spreads** measure the bid to offer spread of the best visible orders in the book. The result is averaged over the stocks in the index and is based on measurements of the order book every 30 seconds. The value for the spread is quoted in basis points (0.01%).
- **Market depth** measures the amount of visible liquidity (bids and offers) in the order book within 10 and 50 BPS of mid price. The result is averaged over the stocks in the index and is based on measurements of the order book every 30 seconds. This is quoted in '000s of EUR.
- **Best Price %** measures how often each venue posts an absolute best price (no ties) for stocks. The result is averaged over the stocks in the index and is based on measurements of the order book every 5 seconds.
- **Equal Best Price %** shows the percentage of time that each venue had an equal best bid or equal best offer price. The stats are based on full-depth order books taken

*Statistics relating to spreads and book depths have been sourced from LiquidMetrix.