

Aquis Exchange Monthly Statistics

Month: Jul-2018
 Value traded (EUR): € 19,200,588,114
 Volume (no. of shares): 1,484,248,084

Monthly Top Stocks by Market Share (continuous trading)

Stock	Symbol	Market Share
Elia System Operator SA/NV	ELIb	12.9%
Fortum OYJ	FORTMh	9.2%
Henkel AG and Co KGaA	HEN3d	9.0%
Davide Campari-Milano SpA	CPRm	7.3%
GVC Holdings PLC	GVCi	7.2%
Givaudan SA	GIVNz	6.5%
Essilor International SA	Elp	6.5%
Michelin	MLp	6.4%
Lonza Group AG	LONNz	6.0%
Novartis AG	NOVNz	6.0%

Monthly Top Stocks by Value (EUR)

Stock	Symbol	Value Traded
Roche Holding AG	ROGz	€ 449,766,150
Novartis AG	NOVNz	€ 380,916,440
Nestle SA	NESNz	€ 359,300,450
Total SA	FPp	€ 234,682,750
Deutsche Post AG	DPWd	€ 172,102,270
Siemens AG	SIEd	€ 167,773,210
ASML Holding NV	ASMLa	€ 165,764,470
BP PLC	BPI	€ 159,078,420
Infineon Technologies AG	IFXd	€ 154,141,950
Daimler AG	DAlD	€ 150,821,370
Rio Tinto PLC	RIOI	€ 150,524,210
UBS Group AG	UBSGz	€ 145,416,350
SAP AG	SAPd	€ 145,296,130
UniCredit SpA	UCGm	€ 144,565,880
Royal Dutch Shell PLC	RDSAa	€ 142,500,540



UK Top Stocks

Stock	Symbol	Market Share
GVC Holdings PLC	GVCi	7.2%
NEX Group PLC	NXGI	5.7%
Genus PLC	GNSI	5.4%
Bunzl PLC	BNZLI	5.4%
DCC Plc	DCCI	5.3%



Italian Top Stocks

Stock	Symbol	Market Share
Davide Campari-Milano SpA	CPRm	7.3%
Prysmian SpA	PRYm	5.0%
Buzzi Unicem SpA	BZUm	5.0%
Moncler SpA	MONCm	4.6%
Telecom Italia SpA	TITm	4.4%



Swedish Top Stocks

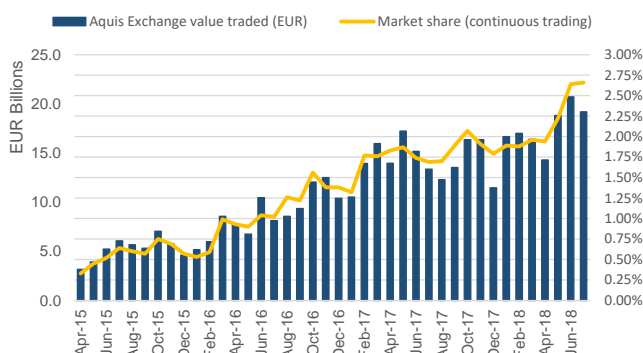
Stock	Symbol	Market Share
Alfa Laval AB	ALFAs	4.7%
Tele2 AB	TEL2Bs	4.4%
Atlas Copco AB	ATCOBs	4.1%
Volvo AB	VOLVBs	4.0%
SSAB AB	SSABAs	3.9%



French Top Stocks

Stock	Symbol	Market Share
Essilor International SA	Elp	6.5%
Michelin	MLp	6.4%
Pernod-Ricard SA	Rlp	5.4%
L'Oreal SA	ORp	5.0%
Capgemini SA	CAPp	4.8%

Aquis Exchange value traded per month



Trading by Market

Market	Value Traded
London	€ 3,964,562,670
Frankfurt	€ 3,494,447,920
Paris	€ 3,257,959,100
Zurich	€ 2,921,830,730
Milan	€ 1,211,402,320
Amsterdam	€ 1,114,816,660
Stockholm	€ 870,277,780
Madrid	€ 659,387,890
Helsinki	€ 417,028,510
Copenhagen	€ 402,245,570
Brussels	€ 348,612,190
Oslo	€ 299,328,070
London IDR	€ 131,630,480
Lisbon	€ 71,571,430
Vienna	€ 35,486,510



German Top Stocks

Stock	Symbol	Market Share
Henkel AG and Co KGaA	HEN3d	9.0%
Deutsche Post AG	DPWd	6.0%
Deutsche Boerse AG	DB1d	5.6%
Infineon Technologies AG	IFXd	4.9%
RWE AG	RWEEd	3.9%



Swiss Top Stocks

Stock	Symbol	Market Share
Givaudan SA	GIVNz	6.5%
Lonza Group AG	LONNz	6.0%
Novartis AG	NOVNz	6.0%
Roche Holding AG	ROGz	6.0%
Nestle SA	NESNz	5.4%



Spanish Top Stocks

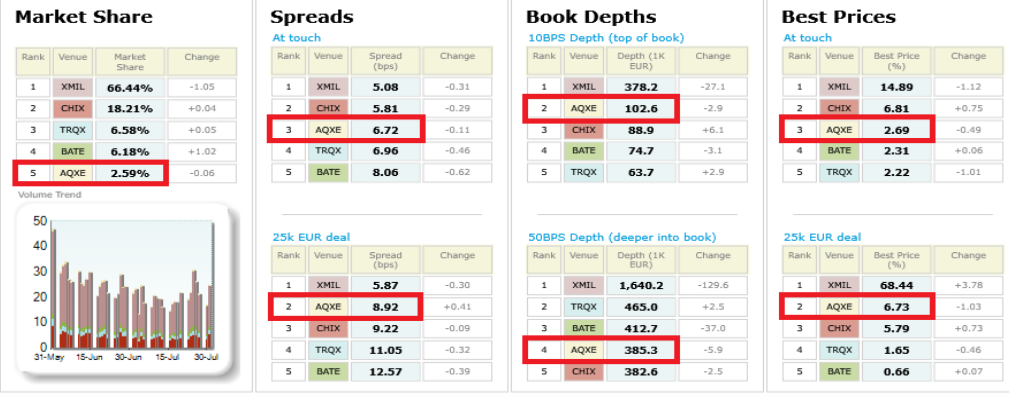
Stock	Symbol	Market Share
Viscofan SA	VISe	6.0%
Amadeus IT Holding SA	AMSe	5.0%
Cellnex Telecom SAU	CLNXe	4.5%
Aena SME	AENaE	4.1%
Enagas SA	ENGe	3.2%



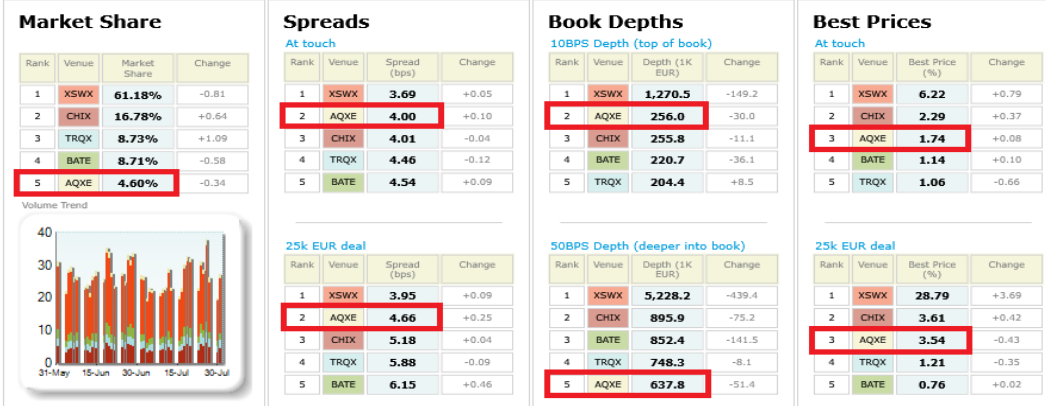
Danish Top Stocks

Stock	Symbol	Market Share
AP Moeller - Maersk A/S	MAERBc	5.6%
William Demant Holding A/S	WDHc	4.8%
Vestas Wind Systems A/S	VVSc	4.8%
Novozymes A/S	NZYMBc	4.0%
Genmab A/S	GENc	3.8%

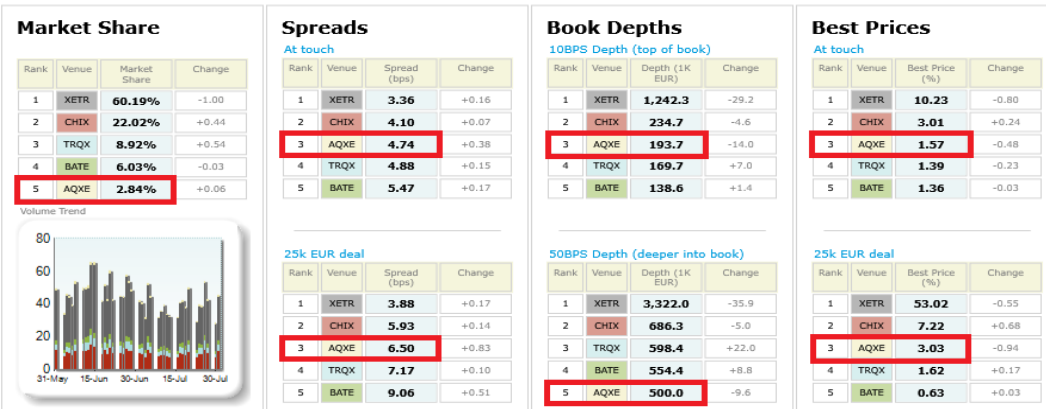
Italian 40 LiquidMetrix Battlemat*



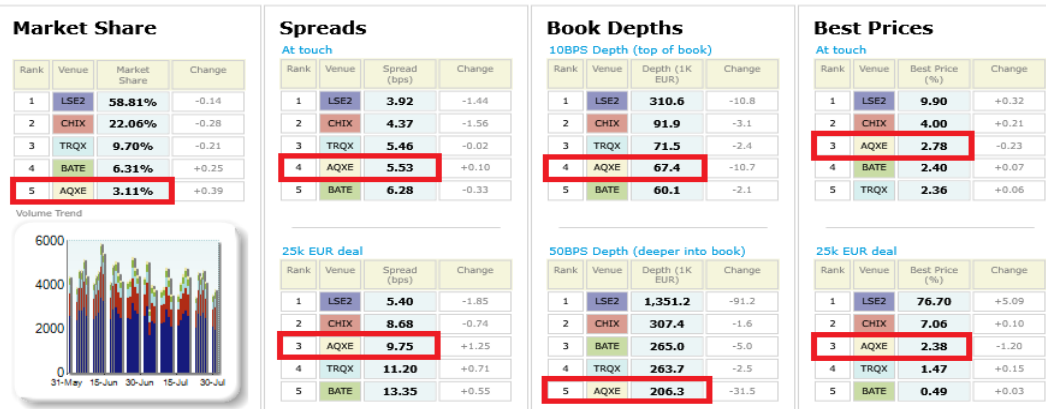
Swiss 20 LiquidMetrix Battlemat*



German 30 LiquidMetrix Battlemat*



UK 100 LiquidMetrix Battlemat*



Italian 40 LiquidMetrix Battlemap*

Percentage Best Price Analysis (Touch Prices)

Venue	Best Bid Price	Equal Best Bid Price	Not Best Bid Price	Best Ask Price	Equal Best Ask Price	Not Best Ask Price
AQXE	2.52%	43.67%	53.81%	2.86%	44.95%	52.19%
BATE	2.35%	41.77%	55.88%	2.27%	41.60%	56.13%
CHIX	6.95%	58.86%	34.19%	6.68%	57.82%	35.49%
TRQX	2.17%	40.47%	57.37%	2.27%	40.79%	56.94%
XMIL	14.85%	61.73%	23.42%	14.93%	61.44%	23.63%

Swiss 20 LiquidMetrix Battlemap*

Percentage Best Price Analysis (Touch Prices)

Venue	Best Bid Price	Equal Best Bid Price	Not Best Bid Price	Best Ask Price	Equal Best Ask Price	Not Best Ask Price
AQXE	1.85%	73.90%	24.25%	1.63%	72.89%	25.48%
BATE	1.11%	65.83%	33.06%	1.16%	65.63%	33.21%
CHIX	2.30%	76.71%	21.00%	2.28%	76.60%	21.12%
TRQX	1.02%	67.50%	31.48%	1.10%	68.27%	30.63%
XSWX	6.11%	80.30%	13.58%	6.32%	79.78%	13.90%

German 30 LiquidMetrix Battlemap*

Percentage Best Price Analysis (Touch Prices)

Venue	Best Bid Price	Equal Best Bid Price	Not Best Bid Price	Best Ask Price	Equal Best Ask Price	Not Best Ask Price
AQXE	1.59%	61.75%	36.66%	1.55%	61.49%	36.95%
BATE	1.33%	49.58%	49.09%	1.39%	49.85%	48.76%
CHIX	3.03%	71.63%	25.34%	2.99%	71.34%	25.67%
TRQX	1.34%	57.58%	41.08%	1.43%	58.23%	40.34%
XETR	10.33%	76.46%	13.21%	10.12%	76.19%	13.69%

UK 100 LiquidMetrix Battlemap*

Percentage Best Price Analysis (Touch Prices)

Venue	Best Bid Price	Equal Best Bid Price	Not Best Bid Price	Best Ask Price	Equal Best Ask Price	Not Best Ask Price
AQXE	2.70%	45.76%	51.54%	2.87%	46.66%	50.47%
BATE	2.42%	41.52%	56.06%	2.39%	42.01%	55.59%
CHIX	4.00%	66.16%	29.84%	4.00%	66.11%	29.89%
LSE2	10.10%	69.92%	19.98%	9.69%	69.45%	20.86%
TRQX	2.30%	51.74%	45.96%	2.41%	52.40%	45.19%

LiquidMetrix definitions:

- **Market share** is based on on-book value traded during continuous trading. The share is calculated by averaging over all stocks in the index.
- **Spreads** measure the bid to offer spread of the best visible orders in the book. The result is averaged over the stocks in the index and is based on measurements of the order book every 30 seconds. The value for the spread is quoted in basis points (0.01%).
- **Market depth** measures the amount of visible liquidity (bids and offers) in the order book within 10 and 50 BPS of mid price. The result is averaged over the stocks in the index and is based on measurements of the order book every 30 seconds. This is quoted in '000s of EUR.
- **Best Price** % measures how often each venue posts an absolute best price (no ties) for stocks. The result is averaged over the stocks in the index and is based on measurements of the order book every 5 seconds.
- **Equal Best Price** % shows the percentage of time that each venue had an equal best bid or equal best offer price. The stats are based on full-depth order books taken

LiquidMetrix
Best Execution, Quantified

AQUIS
EXCHANGE

*Statistics relating to spreads and book depths have been sourced from LiquidMetrix.

© Aquis Exchange PLC 2018. Aquis Exchange PLC is authorised and regulated by the Financial Conduct Authority. This report is for general information only and does not constitute investment advice or an offer, solicitation or recommendation to acquire or dispose of any investment or to engage in any other transaction. Although care is taken to ensure that the information is accurate and up to date, Aquis cannot accept any responsibility for mistakes or omissions.