

Aquis Exchange Monthly Statistics

Month: Mar-2016
 Value traded (EUR): € 8,576,670,323
 Volume (no. of shares): 919,167,411

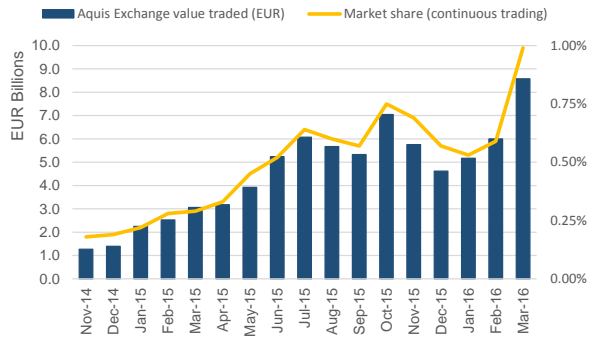
Trading by Market

| Market | Value Traded |
|------------|-----------------|
| London | € 2,162,096,950 |
| Zurich | € 1,794,604,280 |
| Milan | € 1,082,796,800 |
| Frankfurt | € 1,056,208,030 |
| Paris | € 793,199,260 |
| Stockholm | € 470,696,280 |
| Amsterdam | € 430,193,200 |
| Copenhagen | € 179,021,440 |
| Brussels | € 172,270,140 |
| Helsinki | € 152,577,200 |
| Oslo | € 148,232,110 |
| Madrid | € 104,746,600 |
| Lisbon | € 30,028,050 |

Monthly Top Stocks by Value (EUR)

| Stock | Symbol | Value Traded |
|---------------------|--------|---------------|
| Nestle SA | NESNz | € 321,021,350 |
| Novartis AG | NOVNz | € 292,789,660 |
| Intesa Sanpaolo SpA | ISPM | € 195,644,940 |
| Roche Holding AG | ROGz | € 182,325,450 |
| Telecom Italia SpA | TITm | € 144,916,580 |
| UBS Group AG | UBSGz | € 112,469,760 |
| Bayer AG | BAYNd | € 106,438,030 |
| Eni SpA | ENIm | € 102,824,580 |
| Allianz SE | ALVd | € 98,542,840 |
| AB InBev NV | ABlb | € 93,812,240 |

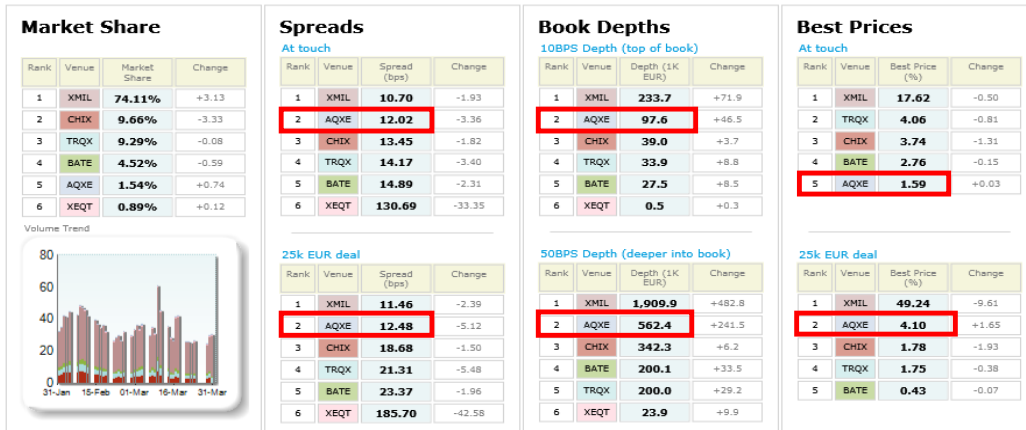
Aquis Exchange value traded per month



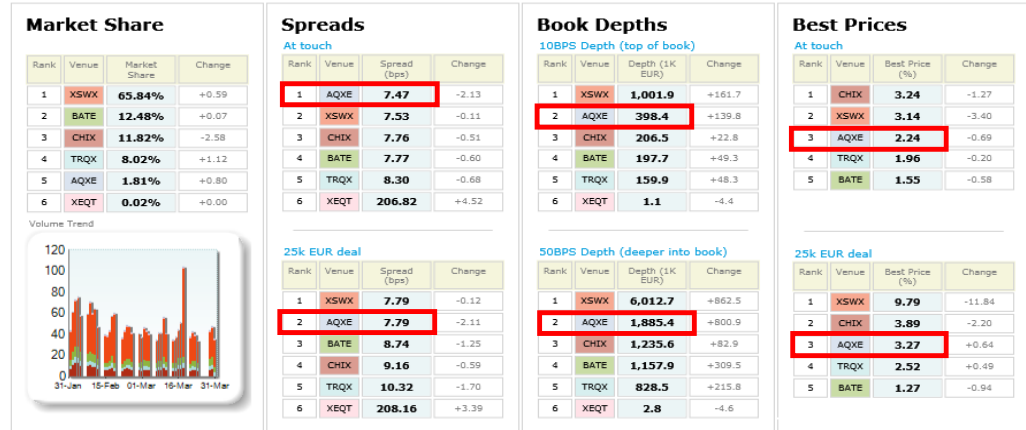
Monthly Top Stocks by Market Share (continuous trading)

| Stock | Symbol | Market Share |
|---------------------------------|--------|--------------|
| Rexam PLC | REXI | 5.4% |
| Telecom Italia SpA | TITm | 5.2% |
| Great Portland Estates PLC | GPORI | 4.7% |
| Kuehne + Nagel International AG | KNINz | 4.5% |
| Logitech International SA | LOGNZ | 3.8% |
| SSE PLC | SSEI | 3.7% |
| Capita PLC | CPIL | 3.6% |
| Compass Group PLC | CPGI | 3.5% |
| Nestle SA | NESNz | 3.5% |
| AP Moeller - Maersk A/S | MAERBc | 3.4% |

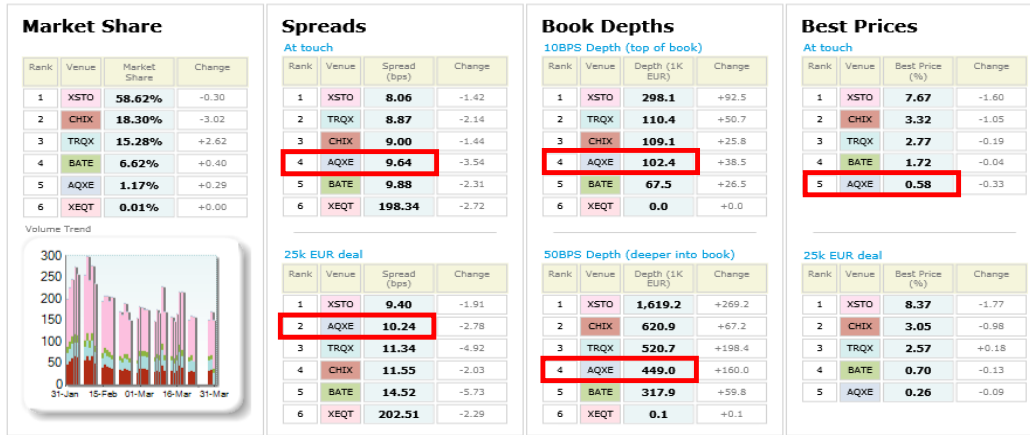
MIB 40 LiquidMetrix Battlemap*



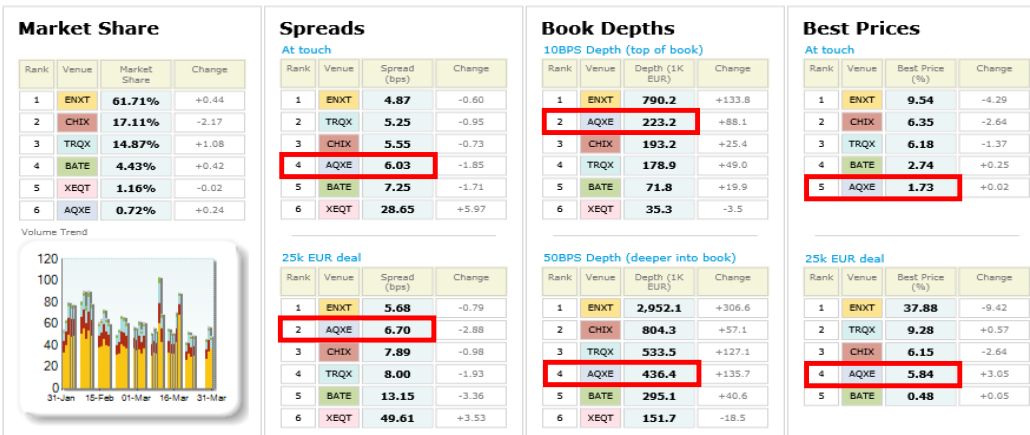
SMI 20 LiquidMetrix Battlemap*



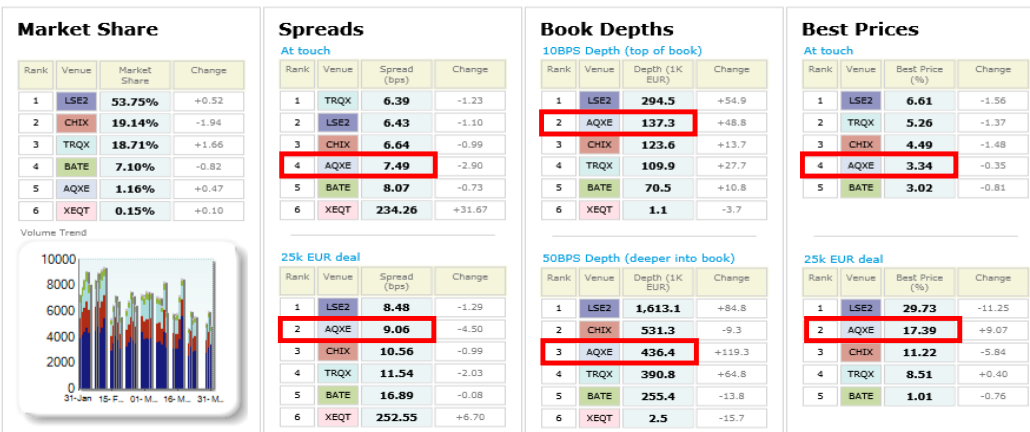
OMX S30 LiquidMetrix Battlemap*



CAC 40 LiquidMetrix Battlemap*



FTSE 100 LiquidMetrix Battlemap*



LiquidMetrix definitions:

- **Spreads** measure the bid to offer spread of the best visible orders in the book. The result is averaged over the stocks in the index and is based on measurements of the order book every 30 seconds. The value for the spread is quoted in basis points (0.01%).
- **Market depth** measures the amount of visible liquidity (bids and offers) in the order book within 10 and 50 BPS of mid price. The result is averaged over the stocks in the index and is based on measurements of the order book every 30 seconds. This is quoted in '000s of EUR.
- **Best Price %** measures how often each venue posts an absolute best price (no ties) for stocks. The result is averaged over the stocks in the index and is based on measurements of the order book every 5 seconds.

LiquidMetrix
Best Execution, Quantified

AQUIS[®]
EXCHANGE

*Statistics relating to spreads and book depths have been sourced from LiquidMetrix.

© Aquis Exchange Limited 2015. Aquis Exchange Limited is authorised and regulated by the Financial Conduct Authority. This report is for general information only and does not constitute investment advice or an offer, solicitation or recommendation to acquire or dispose of any investment or to engage in any other transaction. Although care is taken to ensure that the information is accurate and up to date, Aquis cannot accept any responsibility for mistakes or omissions.